



Phone 888-691-4171  
 FAX 516-682-3510  
 Email [Websupport5@harman.com](mailto:Websupport5@harman.com)  
 Web [www.audioaccess.com](http://www.audioaccess.com)

## TECHNICAL BULLETIN

250 Crossways Park Drive, Woodbury, NY 11797  
 516.496.3400

H A Harman International Company

## CATC/2WSI FIRMWARE UPDATE

NOVEMBER 1, 2005

Page 1 of 3

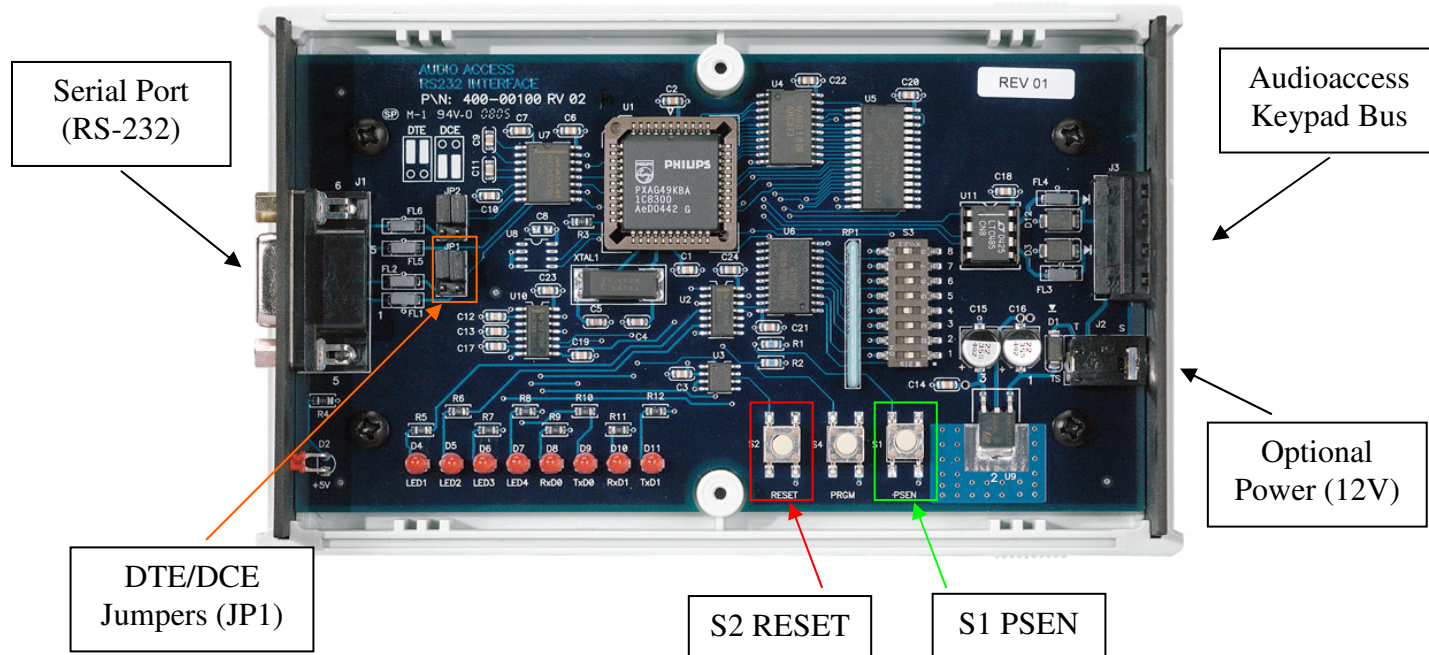
### Overview

Below you will find instructions for updating the firmware for your CATC/2WSI. The CATC/2WSI uses a flash upgrade and can be accomplished from any computer with a serial port. Please use this document to help you correctly install new firmware.

### Tools you will need

1. Computer with a serial port or a USB to serial Adaptor
2. Serial cable (straight through, not Null Modem)
3. Small Phillips head Screwdriver
4. 12 volt power supply or PX-700 to supply power for CATC/2WSI during download
5. Software download utility (available from [www.support.audioaccess.com](http://www.support.audioaccess.com))
6. New firmware (from Audioaccess)

### Detailed Diagram



## Preparation

---

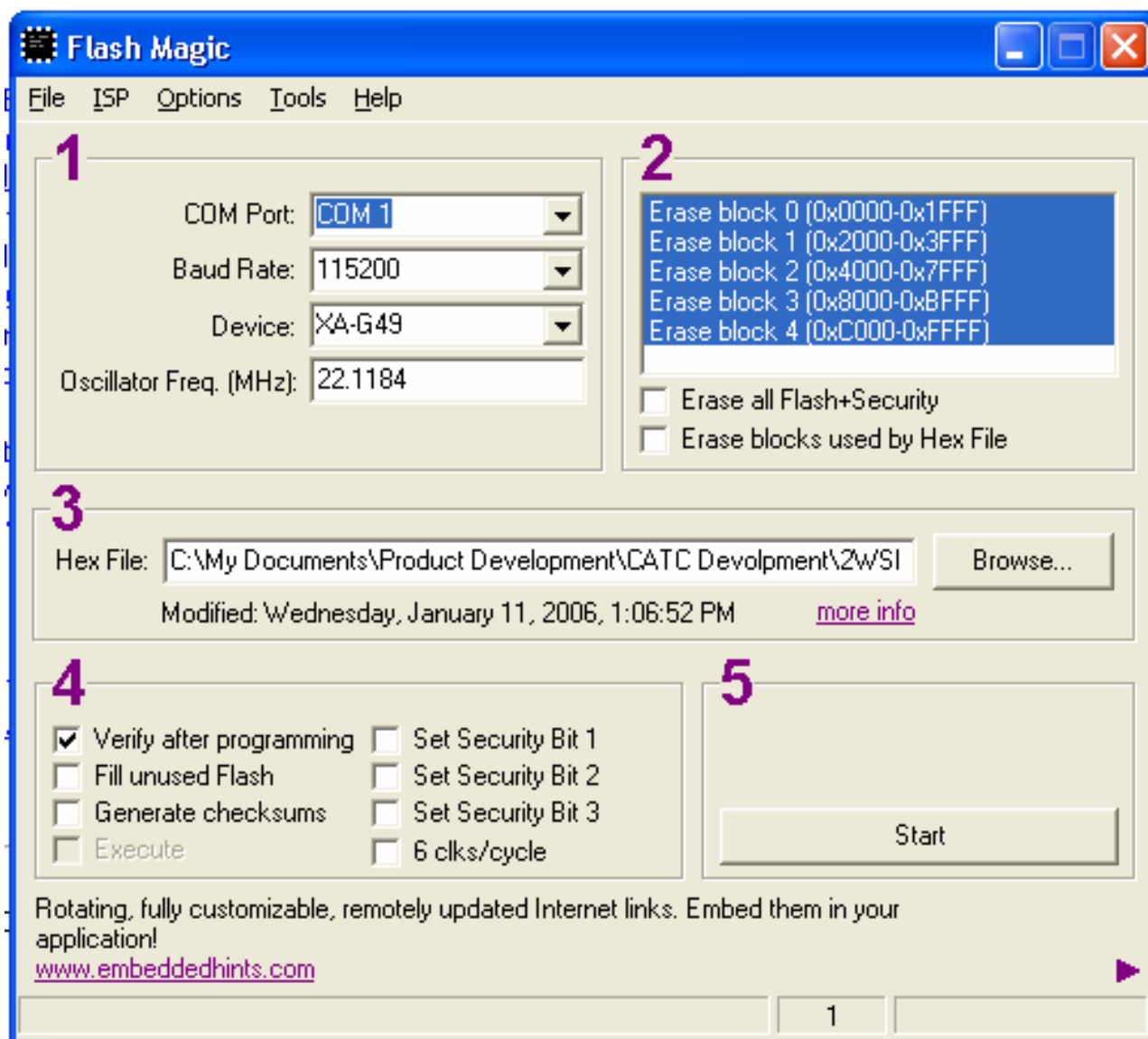
Please refer to the diagram at the end of this sheet for location inside the CATC/2WSI. You will need to install the software utility. Currently we are using “Flash Magic”.

1. Please install “Flash Magic” first.
2. Unzip the firmware file and remember where you saved it.
3. Open “Flash Magic”, now located in your All Programs list, under START → All Programs → Flash Magic (folder) → Flash Magic.
4. Make sure the CATC/2WSI is off and disconnected. The small red LED should not be lit.
5. Open the case of the CATC/2WSI with the small screwdriver. The two (2) screws are on the top of the cover. Remove the cover.
6. Connect the serial cable to the serial port of your computer, and the other end to the serial port of the CATC/2WSI.
7. Make sure the headers on location JP1 are in the TOP position and that you are using a straight through serial cable (not null modem).
8. Connect power to the CATC/2WSI using either a 12 volt power adaptor (wall wart) or PX-700 via the KPS connector.
9. Press and hold the RESET (S2), press and hold the PSEN (S1), release the RESET and then release the PSEN. The unit is now in “ISP” mode.

## Software Download

---

1. Make sure you have the following selections for the **Settings**:
  - **Device** = XAG49
  - **Serial Port** = Select the serial port that you are using. You may need to check this in your **Hardware Setting** in the **Control Panel** of **Windows®**
  - **Hex File** = Click the folder icon. You will need to navigate to the firmware file that you unzipped.
  - **Clock Speed** = 22.1149
  - **Select and highlight all blocks to erase**
  - **Verify after programming should be checked**



2. Click Start.
3. If there are any errors the program will alert you.

**If you have any problems, or the software cannot connect to the device, check all connections, make sure you are using the correct serial port, and then start again at Step 1.**

4. Press the RESET button, and then power cycle the unit by disconnecting power and then reconnecting.

You are now ready to reconnect the CATC/2WSI to the Audioaccess system.